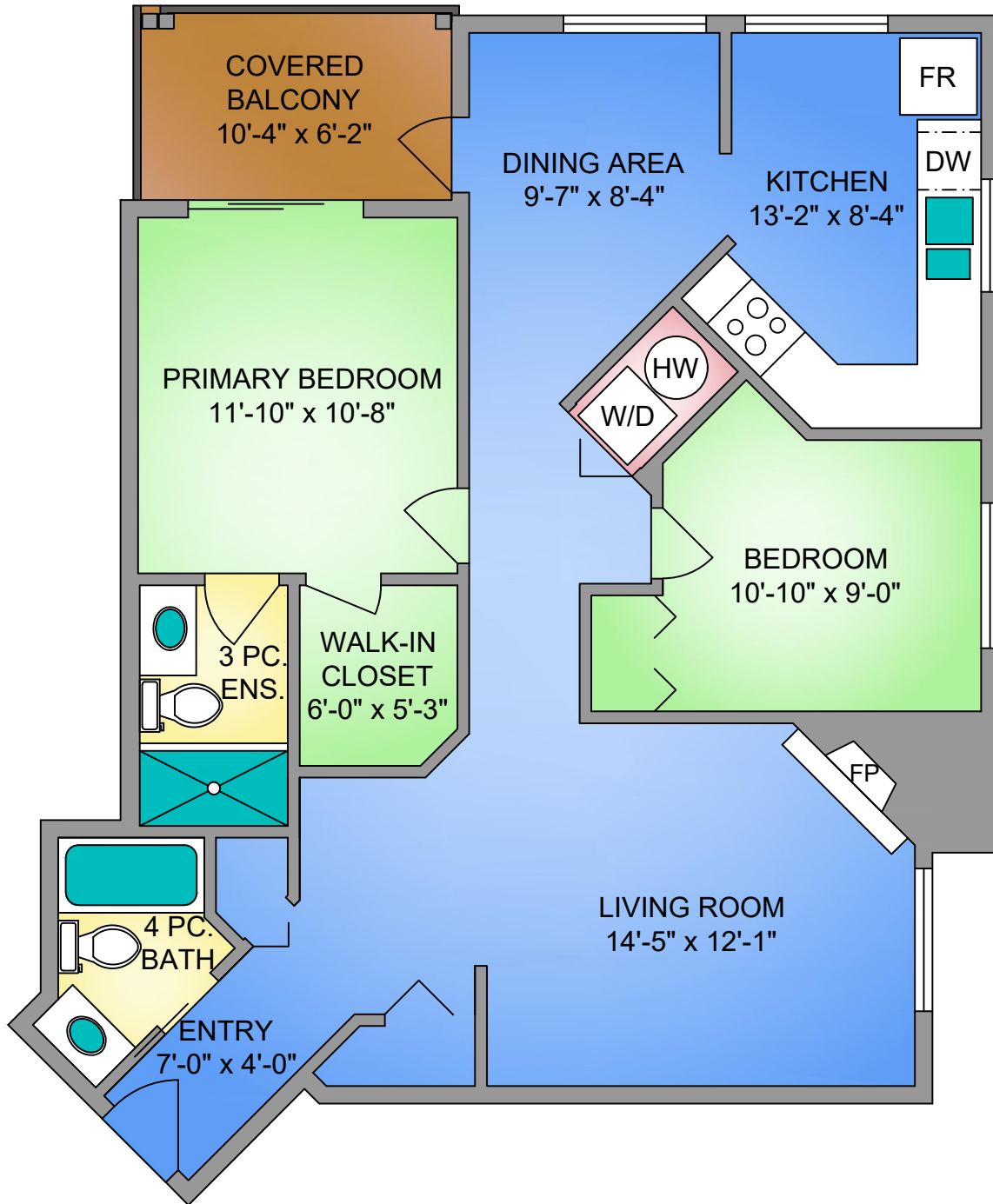
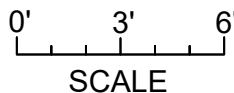
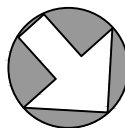


UNIT 403 - 490 MARSETT PLACE
974 SQ. FT.
 8'-0" CEILING HEIGHT



NORTH



UNIT 403 - 490 MARSETT PLACE		
AUGUST 30, 2021		
PREPARED FOR THE EXCLUSIVE USE OF PROPERTIES IN VICTORIA PROFESSIONALS <small>PLANS MAY NOT BE 100% ACCURATE, IF CRITICAL BUYER TO VERIFY.</small>		
FLOOR	AREA (SQ. FT.)	
	FINISHED	BALCONY
FOURTH	974	64



250-884-9753
 matt@propermeasure.com
 www.propermeasure.com