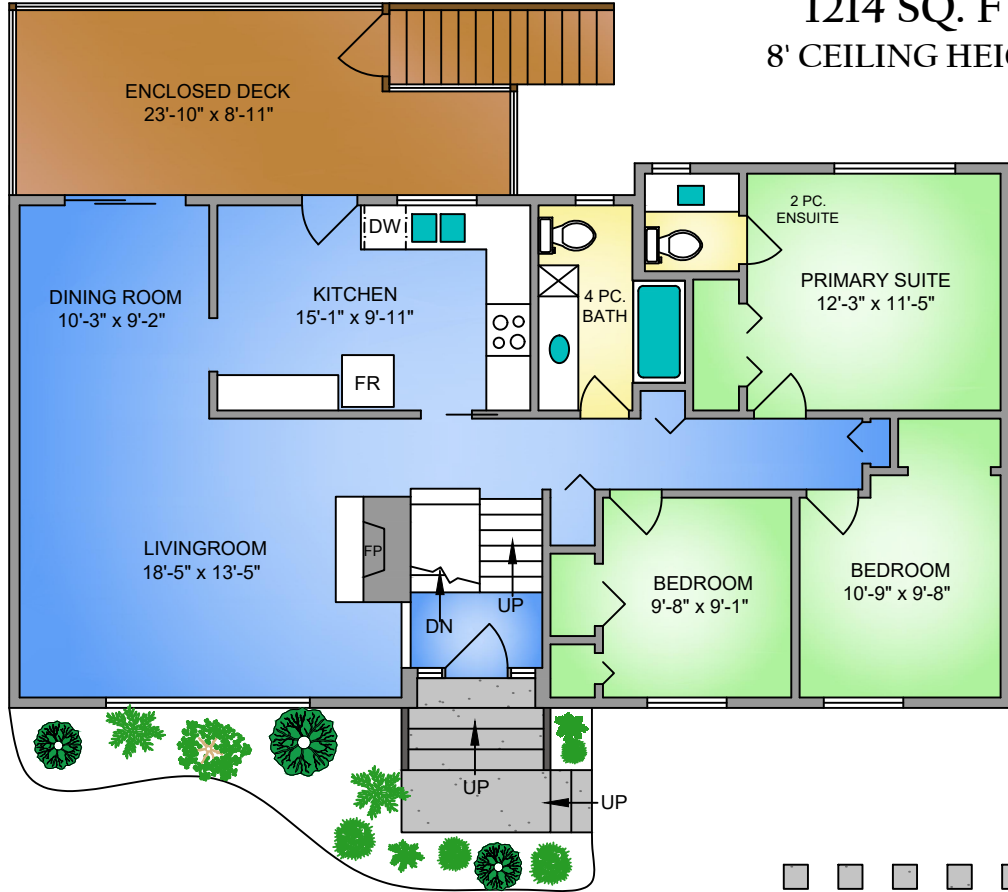


MAIN FLOOR

1214 SQ. FT.

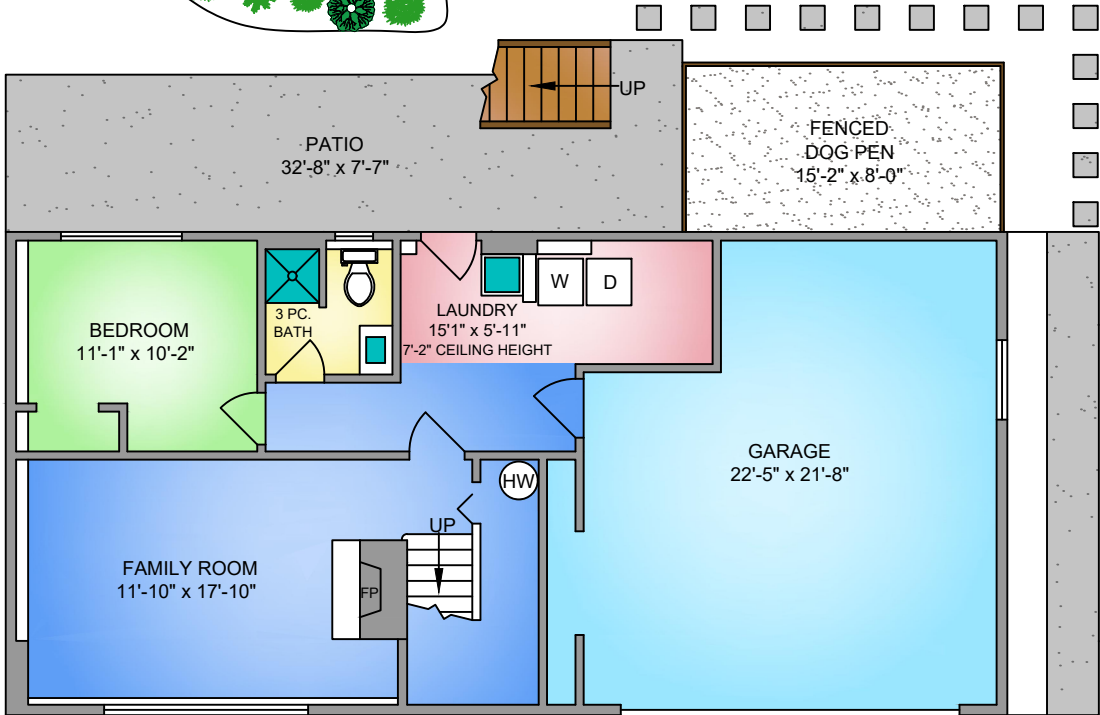
8' CEILING HEIGHT



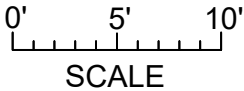
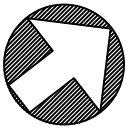
LOWER FLOOR

672 SQ. FT.

8' CEILING HEIGHT



NORTH



4294 TORQUAY DRIVE SEPTEMBER 10, 2020			
PREPARED FOR THE EXCLUSIVE USE OF PROPERTIES IN VICTORIA PROFESSIONALS PLANS MAY NOT BE 100% ACCURATE, IF CRITICAL BUYER TO VERIFY.			
FLOOR	AREA (SQ. FT.)		
	FINISHED	GARAGE	DECK / PATIO
MAIN	1214	-	188
LOWER	672	453	224
TOTAL	1886	453	412



250-884-9753
matt@propermeasure.com
www.propermeasure.com

