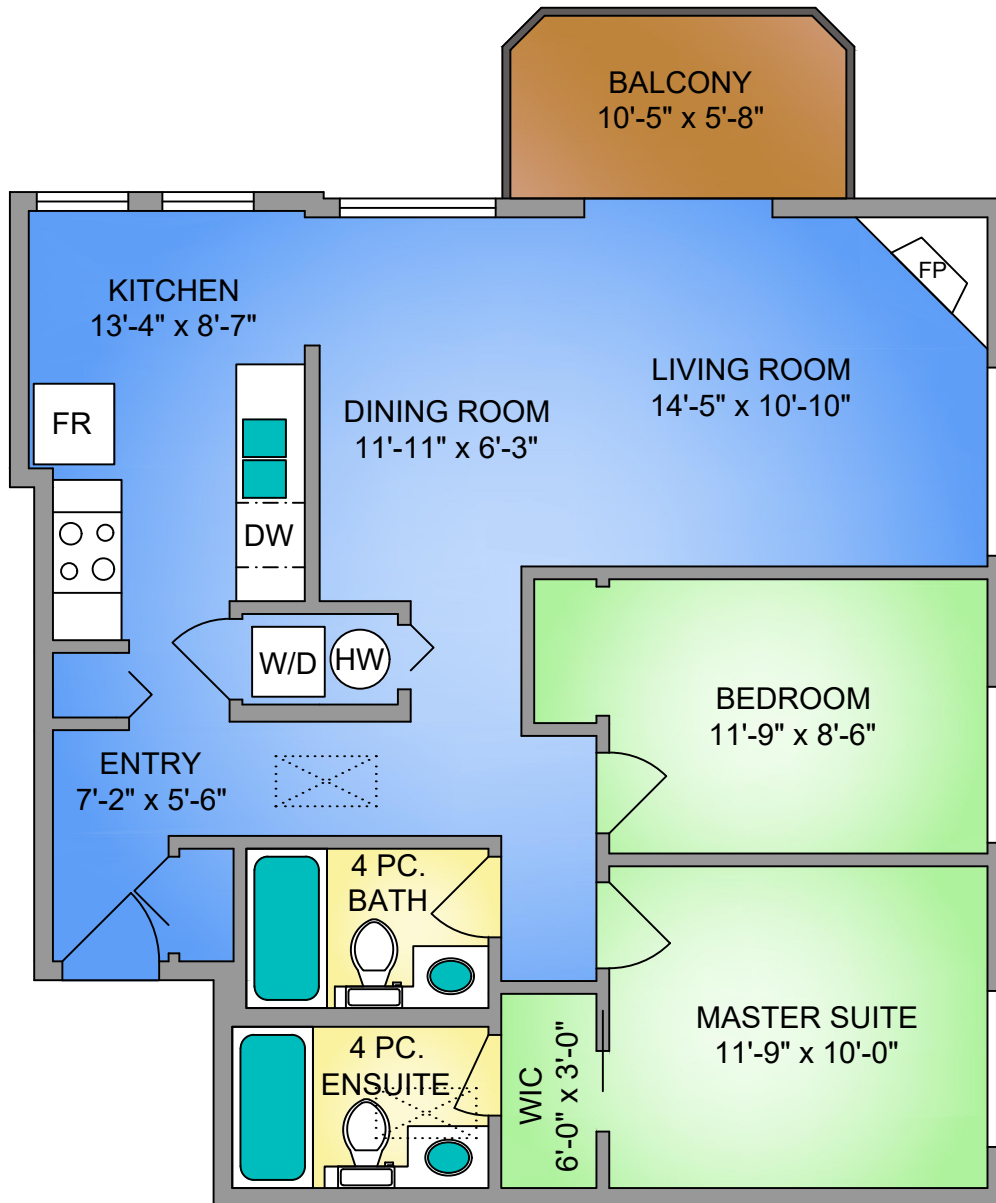
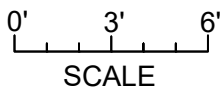
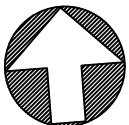


UNIT 401 - 1028 BALMORAL ROAD
881 SQ. FT.
8' CEILING HEIGHT



NORTH



UNIT 401 - 1028 BALMORAL ROAD		
MARCH 10, 2020		
PREPARED FOR THE EXCLUSIVE USE OF PROPERTIES IN VICTORIA PROFESSIONALS		
PLANS MAY NOT BE 100% ACCURATE, IF CRITICAL BUYER TO VERIFY.		
FLOOR	AREA (SQ. FT.)	
	FINISHED	BALCONY
FOURTH	881	51



250-884-9753
 matt@propermeasure.com
 www.propermeasure.com