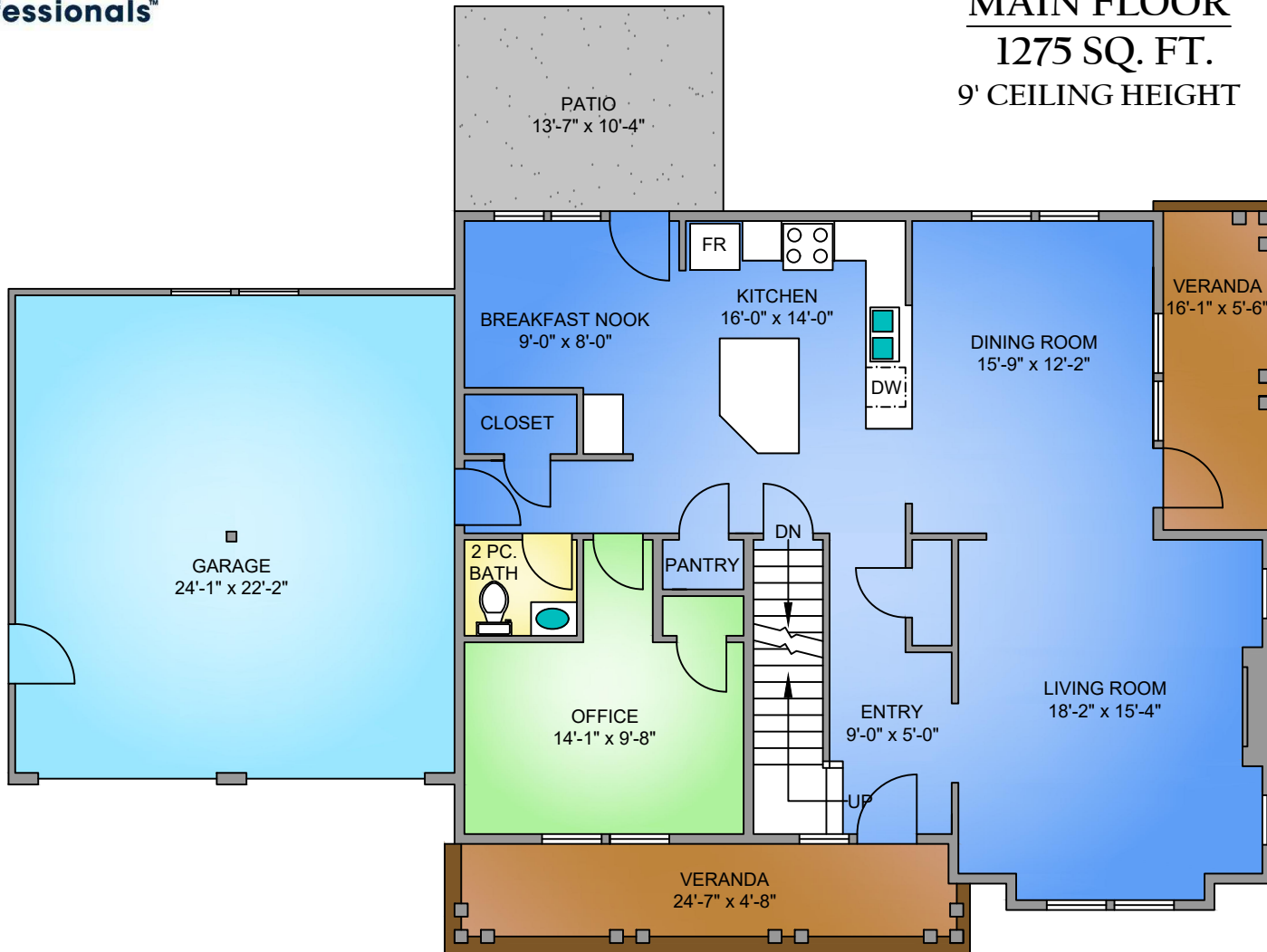
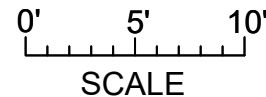


Property currently under construction

MAIN FLOOR
1275 SQ. FT.
9' CEILING HEIGHT

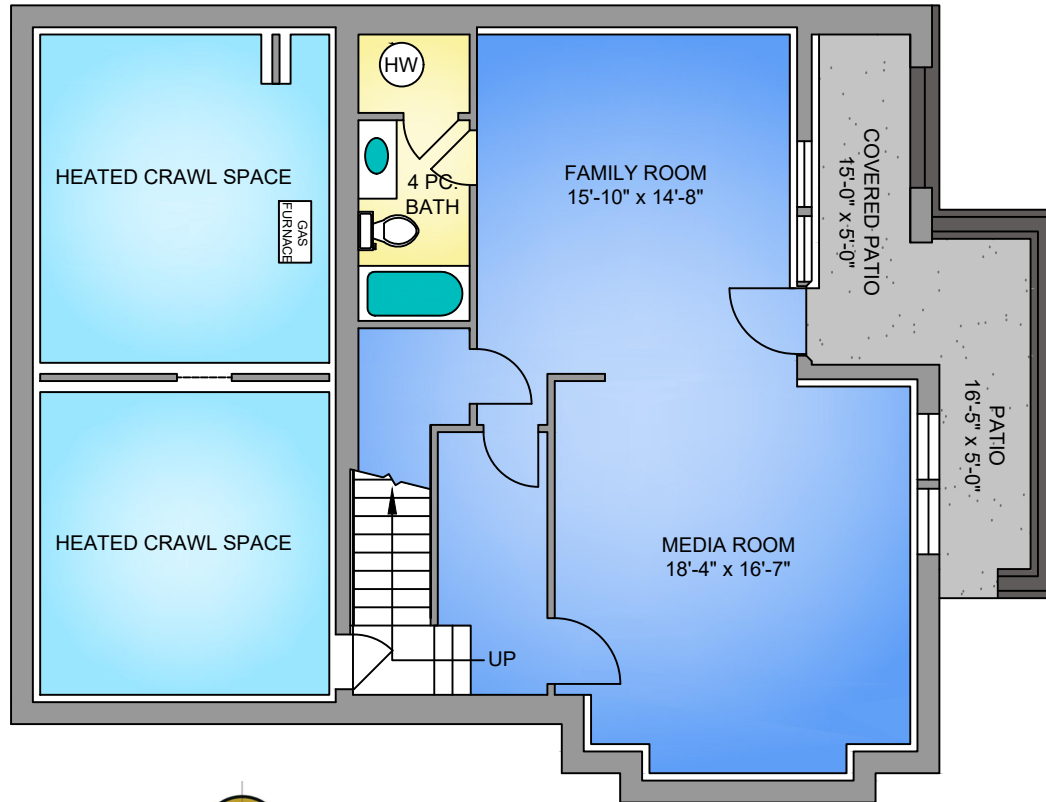
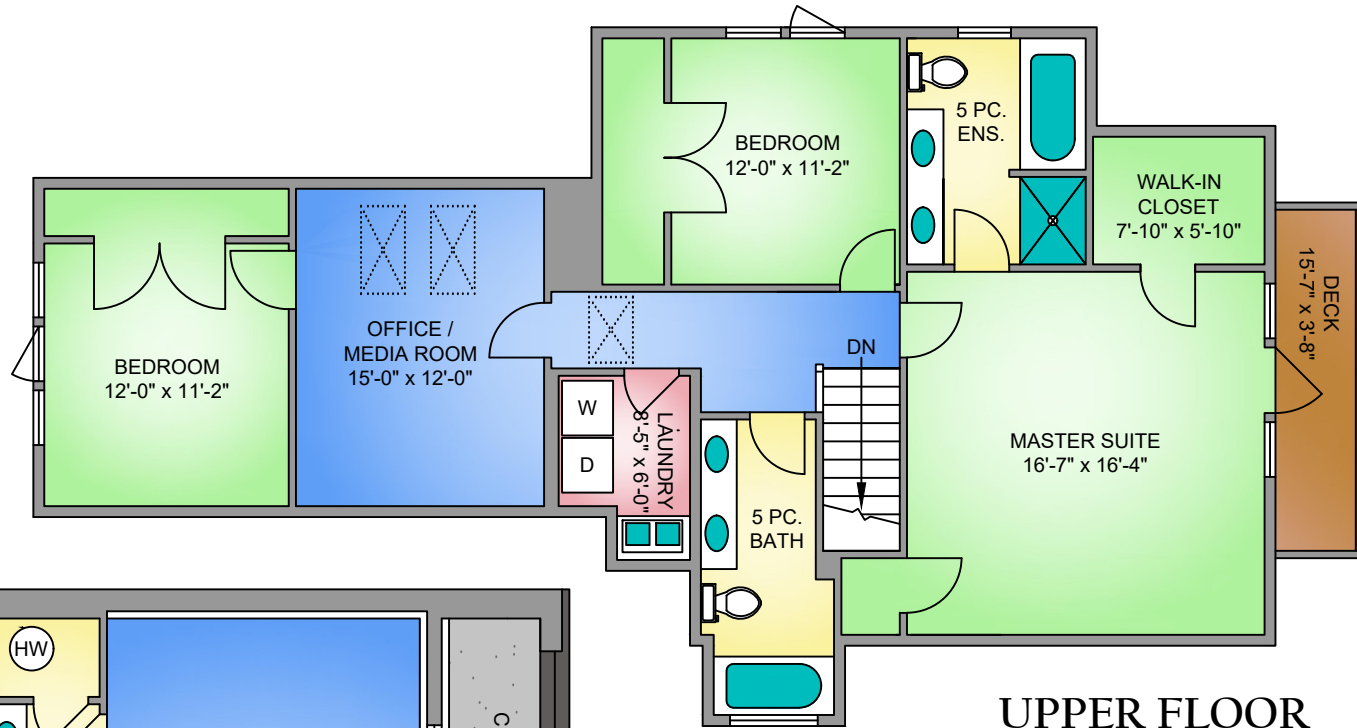


NORTH



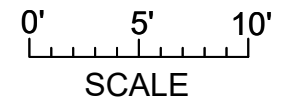
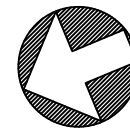
3139 BOWKETT PLACE JANUARY 16, 2020			
PREPARED FOR THE EXCLUSIVE USE OF PROPERTIES IN VICTORIA PROFESSIONALS PLANS ARE A REPRODUCTION OF CONSTRUCTION DRAWINGS AND MAY NOT BE 100% ACCURATE, IF CRITICAL BUYER TO VERIFY.			
FLOOR	AREA (SQ. FT.)		
	FINISHED	CRAWL	GARAGE
MAIN	1275	-	552
UPPER	1248	-	-
LOWER	755	498	-
TOTAL	3278	498	552

LOWER FLOOR
755 SQ. FT.
8' CEILING HEIGHT



UPPER FLOOR
1248 SQ. FT.
9' CEILING HEIGHT

NORTH



3139 BOWKETT PLACE JANUARY 16, 2020			
PREPARED FOR THE EXCLUSIVE USE OF PROPERTIES IN VICTORIA PROFESSIONALS PLANS ARE A REPRODUCTION OF CONSTRUCTION DRAWINGS AND MAY NOT BE 100% ACCURATE, IF CRITICAL BUYER TO VERIFY.			
FLOOR	AREA (SQ. FT.)		
	FINISHED	CRAWL	GARAGE
MAIN	1275	-	552
UPPER	1248	-	-
LOWER	755	498	-
TOTAL	3278	498	552