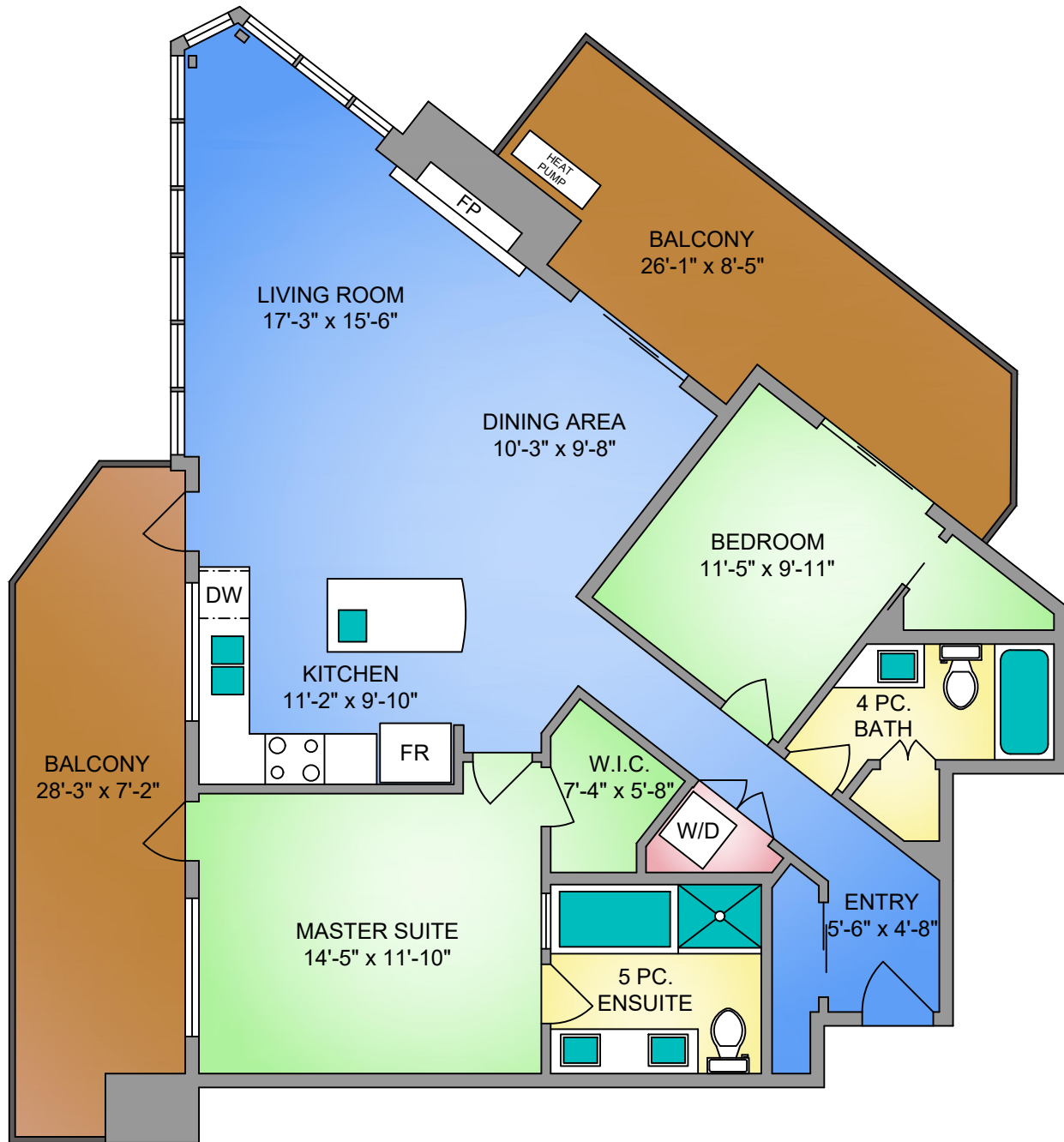


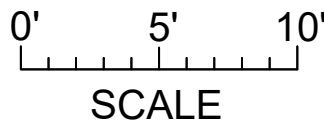
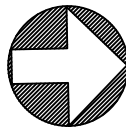
**UNIT 304-2850 ALDWYND ROAD**

**1150 SQ. FT.**

**9' CEILING HEIGHT**



**NORTH**



250-884-9753  
 matt@propermeasure.com  
 www.propermeasure.com

UNIT 304 - 2850 ALDWYND ROAD NOVEMBER 20, 2019		
PREPARED FOR THE EXCLUSIVE USE OF PROPERTIES IN VICTORIA PROFESSIONALS PLANS MAY NOT BE 100% ACCURATE, IF CRITICAL BUYER TO VERIFY.		
FLOOR	AREA (SQ. FT.)	
	FINISHED	BALCONY
THIRD	1150	361