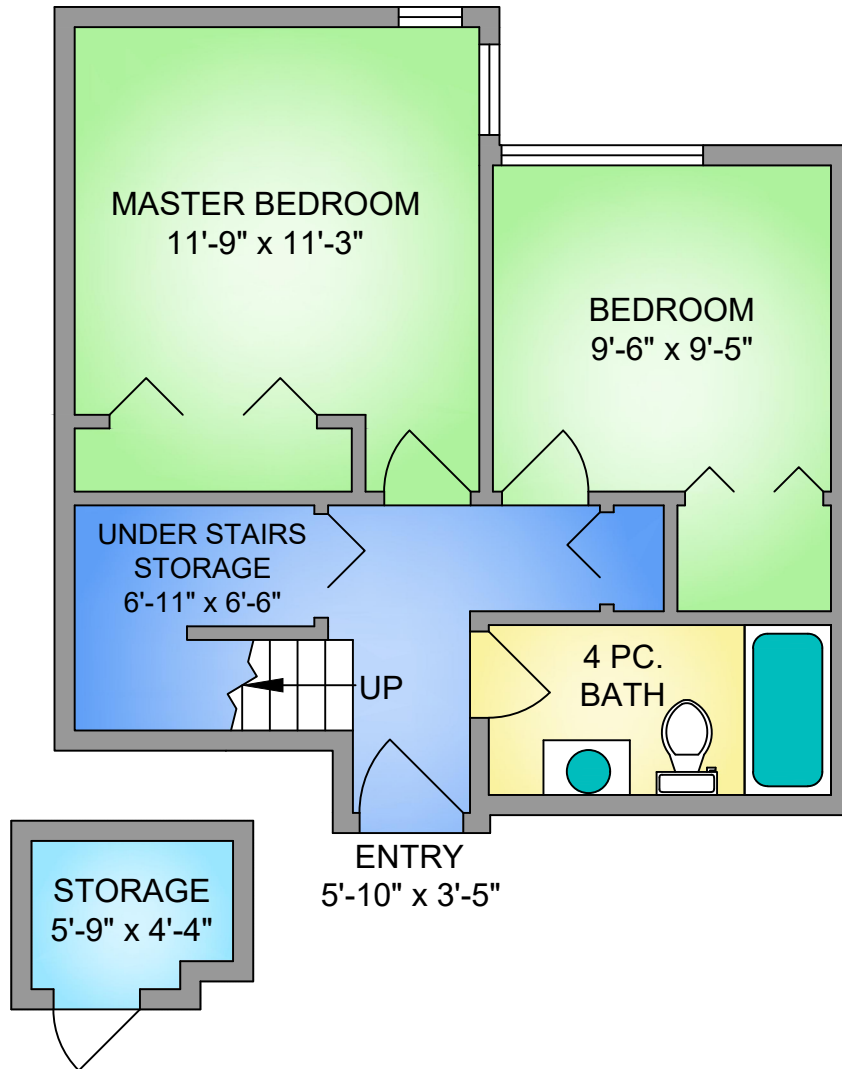


FIRST FLOOR

462 SQ. FT.

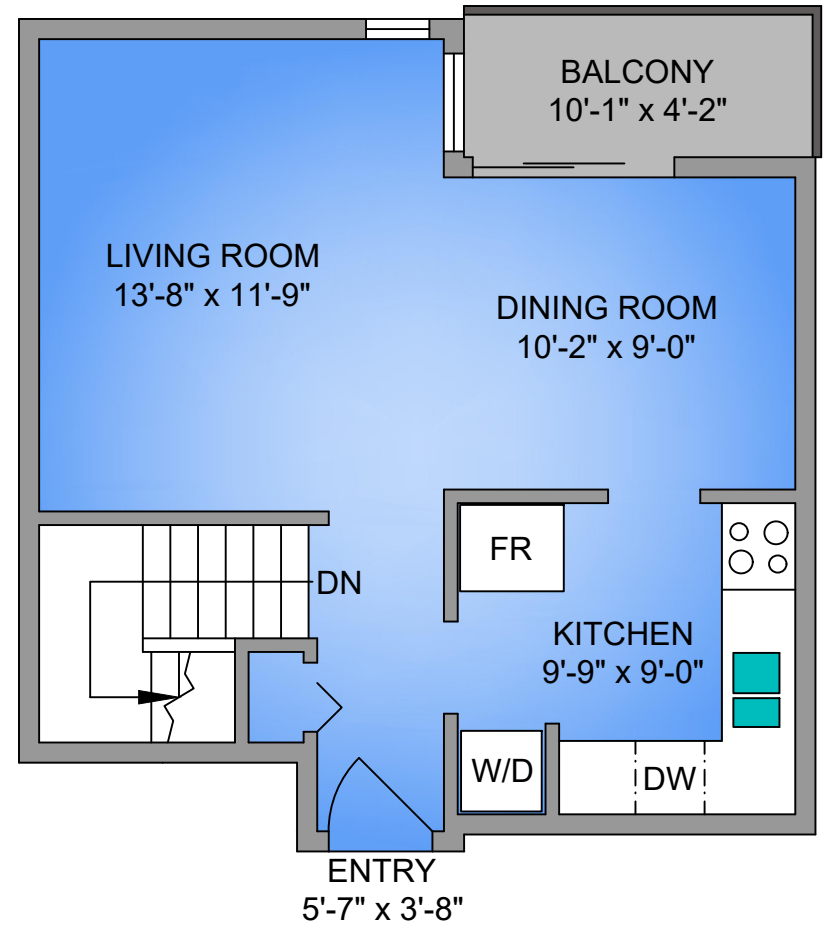
8' CEILING HEIGHT



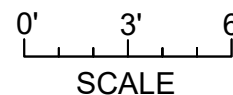
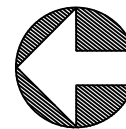
SECOND FLOOR

466 SQ. FT.

8' CEILING HEIGHT



NORTH



UNIT 219-1366 HILLSIDE AVENUE		
AUGUST 15, 2019		
PREPARED FOR THE EXCLUSIVE USE OF PROPERTIES IN VICTORIA PROFESSIONALS PLANS MAY NOT BE 100% ACCURATE, IF CRITICAL BUYER TO VERIFY.		
FLOOR	AREA (SQ. FT.)	
	FINISHED	BALCONY
FIRST	462	-
SECOND	466	41
TOTAL	928	41