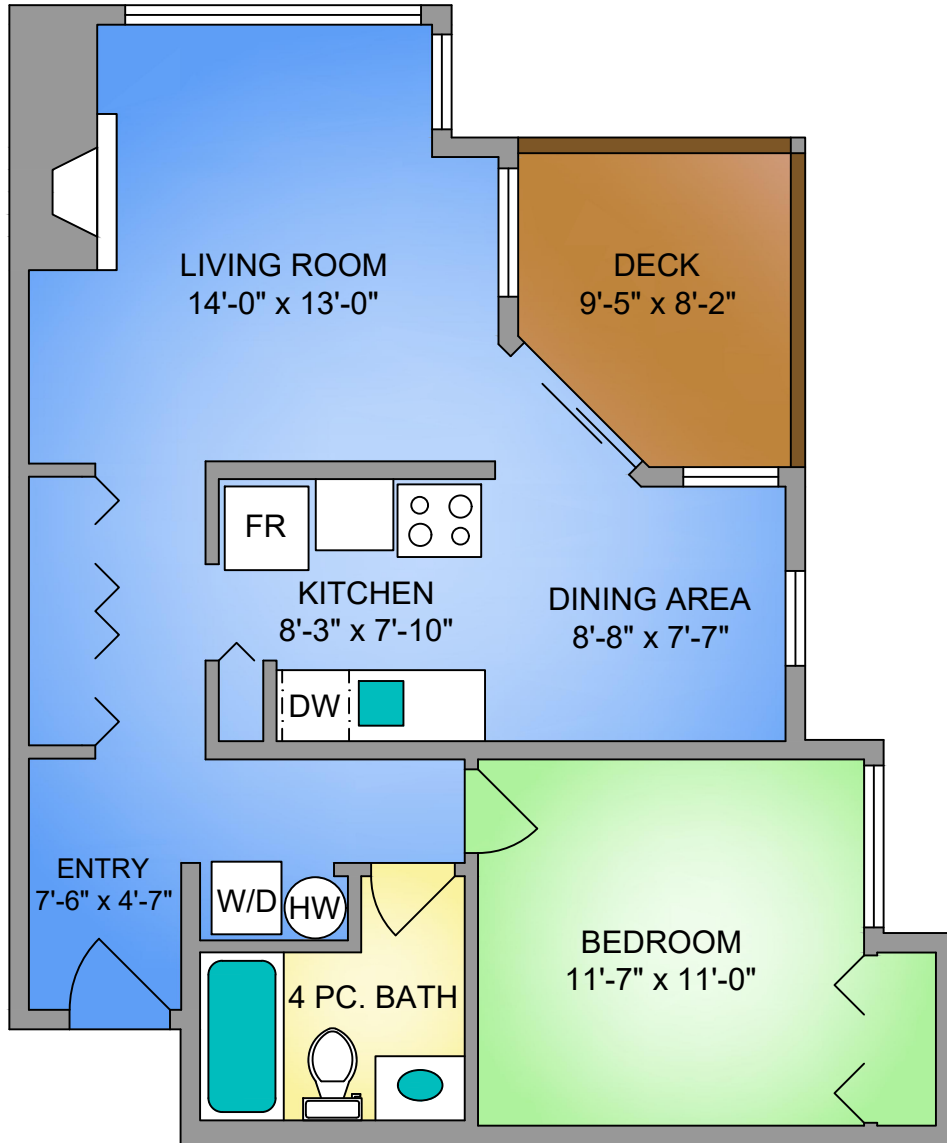


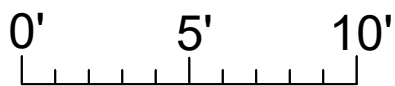
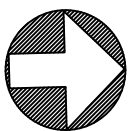
# UNIT 205 - 1619 MORRISON STREET

684 SQ. FT.

8' CEILING HEIGHT



NORTH



SCALE

| UNIT 205 - 1619 MORRISON STREET  |                |         |
|--|----------------|---------|
| MARCH 21, 2019   |                |         |
| PREPARED FOR THE EXCLUSIVE USE OF PROPERTIES IN VICTORIA PROFESSIONALS |                |         |
| PLANS MAY NOT BE 100% ACCURATE, IF CRITICAL BUYER TO VERIFY.           |                |         |
| FLOOR  | AREA (SQ. FT.) |         |
|  | FINISHED       | BALCONY |
| SECOND   | 684            | 77      |



250-884-9753  
 matt@propermeasure.com  
 www.propermeasure.com

